



Coupe *SIII*

Customer enquiries: 0800 981 981

Model featured on front cover:
Hyundai Coupe 2.0 *SIII* in Carbon Grey

Your local Hyundai Dealer

Specifications shown in this brochure are based upon the latest available information at the time of printing.

The colours and finishes reproduced in this brochure are subject to the limitations of the printing process and may vary from the actual colour and paint finish.

In line with our policy of continual product improvement Hyundai Motor UK Ltd reserves the right to make changes at any time, without notice, to prices, colours, material, design, shape, specifications and models, and to discontinue items.

For the latest details, please consult your Hyundai dealer.

Hyundai Motor UK Ltd
St John's Court, Easton Street
High Wycombe, Bucks HP11 1JX
Tel: 01494 428600 Fax: 01494 428699



This brochure is printed on FSC certified paper comprising 50% virgin fibre, 25% de-inked post-consumer waste and 25% pre-consumer waste, pulps used are elemental chlorine free.

06/08 HB2675

Drive your way™

 **HYUNDAI** Coupe *SIII*



HYUNDAI



We all know that buying a car is a big decision. But it's a decision that is made easier when the car in question is a Hyundai. And with a Hyundai you can be sure of one thing: it will drive well and continue to drive well. It could just be the best decision you ever make.

fiveyear warranty

No other manufacturer offers the unique Five Year Warranty Hyundai does, which is not only fully transferable and comes with unlimited mileage, but is also backed by Hyundai. It's a testament to our commitment to our customers and the confidence we have in the quality of our product.

Extensive range

Hyundai cars appeal to every type of driver and the product range reflects this, leaving all tastes satisfied and all things considered. From city runabout, to rugged off-roader, to executive saloon, through to sleek sports coupe, Hyundai cars are designed for a purpose and for individuals who know what they want.

Technology

At Hyundai we constantly strive for perfection, and nowhere is this more apparent than in our technological innovation. We design, develop and evolve all things mechanical, electrical and functional to help make Hyundai the car of choice for the discerning driver who recognises the importance of quality, performance and value for money.

Hyundai European Headquarters, Frankfurt, Germany







Coupe

A car that's sure of itself, so that you can be certain of its performance

redefined

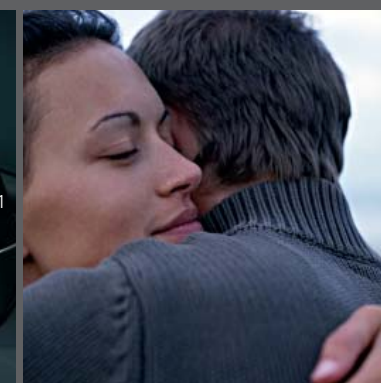
At Hyundai, the pursuit of quality defines everything we do, and nowhere is this more true than in the new Hyundai Coupe *SIII*. It is a highly original and individual vehicle, created to set new standards in design, performance and value. The car some thought couldn't get any better is now the car other Coupes want to be.

Take a look at the front of the new Hyundai Coupe *SIII* and you'll notice how the headlights, bumper and grille have been remodelled to look even more desirable. To the side, we've removed the 'shark' gill vents and replaced them with a classic sports version that demands your attention, whilst at the back, the exhaust has a new tail pipe profile to accentuate the overall impact of the car. In addition, two new stunning alloy wheel designs are available with a 16" design on the 1.6, and 17" design on the 2.0.

The 2.0 *TSIII* model also has a 17" anthracite finish alloy wheel. To make it as cool to drive as it is to look at, we have upgraded to climate control from air conditioning on the 2.0 models only.



01



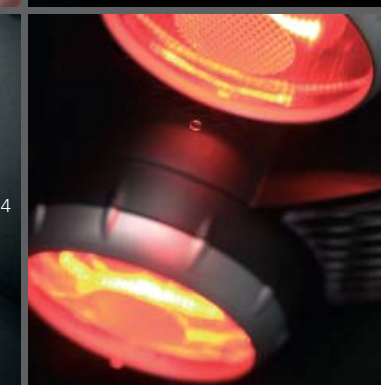
02



03



04



05

- 01 Body coloured door mirror
- 02 Chrome finish exhaust
- 03 New rear light cluster

- 04 Remote fuel filler flap
- 05 Rear spoiler

revealing

Take a close look at the inside of the new Hyundai Coupe *SIII* and you're sure to notice the finer detail of this transformed car. Everything is in its place and ergonomically designed to give you all you need from a car.

The cabin in the new Hyundai Coupe *SIII* has been built with drivers like you in mind. Drivers who know what they want out of a performance car and who like to feel in control. From the soft blue glow of the instrument panel, to the firm but comfortable grip of the leather steering wheel, the new Hyundai Coupe *SIII* puts you truly in the driving seat.

There's a refinement and elegance about the car that is understated but very real. The new Hyundai Coupe *SIII* comes alive on the road but it also feels alive inside with its stylish and desirable interior.



* Model featured is the 2.0 Coupe *SIII* Automatic

reactivated

This time around we've made the new Hyundai Coupe *SIII* even more sophisticated and stylish than the previous model in order to deliver an exhilarating driving experience, and provoke a fantastic response from all who see it on the road.



- 01 H-matic automatic transmission**
- 02 Interior blue instrumentation lighting
- 03 Cruise control*
- 04 Multi gauge instrument panel*



Model featured is the 1.6 Coupe *SIII* in Sleet Silver Metallic Paint



- 01 Leather interior*
- 02 Electric window/mirror controls
- 03 Chrome detail air vents
- 04 Climate control*

*2.0 models only
**2.0 *SIII* models only



Model featured is the 2.0 Coupe *SIII* in Sleek Silver Metallic Paint

renewed For your comfort, we have
focused as much on the inside as on the
outside of the new Hyundai Coupe *SIII*.

The smallest details have been considered, from the integrated glass audio antenna, to the iPod™ connection for the audio system that enables you to play your favourite music whenever you're at the wheel. We've added chrome detailing to the fascia and air vents, plus a sporty new seat design that moulds around your back and has the added luxury of being heated in all our 2.0 models. With red[§] or black[▲] leather interior options, you can decide the combination that suits you for that extra touch of individuality, whilst on the outside, new light designs, both front and back accentuate the overall impressive look of the new Hyundai Coupe *SIII*.

A car that doesn't hide its best features

[§] Red trim is available as standard with Stone Black paint finishes and Carbon Grey paint finishes for all *SIII* models

[▲] Black trim available as standard with all other colour options

* 2.0 models only



04



05



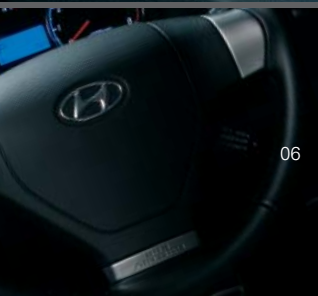
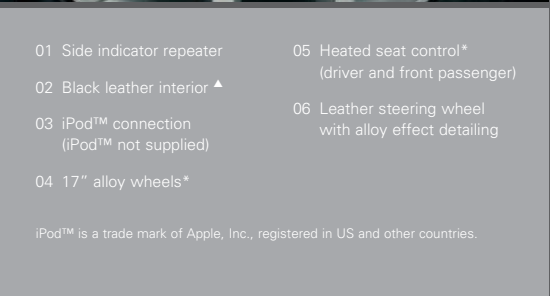
01



02



03



06

- 01 Side indicator repeater
- 02 Black leather interior [▲]
- 03 iPod™ connection (iPod™ not supplied)
- 04 17" alloy wheels*
- 05 Heated seat control* (driver and front passenger)
- 06 Leather steering wheel with alloy effect detailing

iPod™ is a trade mark of Apple, Inc., registered in US and other countries.

comfort and safety

The new Hyundai Coupe *SIII* is a performance car that proudly puts safety first, no matter whether that's your personal safety or the security of your vehicle.

Driver, front passenger and side airbags are fitted as standard, providing all-round protection in the event of a collision. Coupe *SIII*'s Anti-lock Braking System (ABS) and Electronic Brake force Distribution (EBD) aid in delivering the maximum brake efficiency possible in the event of an emergency situation, inspiring confidence and an assured feeling on the road.

Safety is an important factor, but so too is comfort. Coupe *SIII* has been designed with these parameters in mind. Features like the 2x3 point rear seatbelts, adjustable front head restraints and the rear ISOfix child seat anchorage points, ensure comfort for you and your passengers.

The Coupe *SIII* attracts many admiring glances, but thanks to features like remote central locking, integral alarm and engine immobiliser system, the likelihood of your car being targeted by thieves is reduced. All of these refinements makes the Coupe *SIII* the epitome of safe, versatile and secure driving.



options

Although the Coupe *SIII* is a complete car in every way, we offer additional customer options allowing you to personalise your new car to your own specification.

Our integrated Smartnav™ system gets you where you want to be safely, efficiently and at the touch of a button. A leather interior upgrade for 1.6 models adds to the plushness of Coupe's already attractive interior, whilst the choice of metallic or mica paint options lets you choose the colour and finish that best suits your tastes. Customer options add something more to what is already an outstanding car.

- 01 Driver airbag
- 02 Central locking and immobiliser (design may vary)
- 03 Anti-lock Brakes (ABS) with Electronic Brake force Distribution (EBD)

- 01 Metallic paintwork
- 02 Smartnav™ button
- 03 Leather interior option for 1.6



Drive with confidence



TS III

The *TSIII*. Invigorating. Irresistible. Inspired

If you thought the Coupe *SIII* was already as good as it gets, then think again. The limited edition Hyundai Coupe *TSIII* boasts a host of luxurious styling features that enhance the already excellent standard *SIII* specification, making it a truly desirable sports Coupe guaranteed to set your pulse racing.

Take a closer look at the Coupe *TSIII* and you'll notice a sleeker more aggressive bodyline, with Eibach sports springs giving a lower profile and providing a more focused handling experience. The addition of rear quad exhaust pipes and a high level boot spoiler with integral brake light give the back of the Coupe a distinctive appearance that other drivers will need to get used to seeing. With such undeniable road presence it's a car that really does look like it means business. The Coupe *TSIII* is refreshingly exclusive, from the hand stitched 'diamond' quilting on the black leather sports seats to the embroidered *TSIII* logo on the top of each seat back, not to mention the chrome sill guards, also emblazoned with the logo. No matter what angle you view the *TSIII* from, it's a car that will look good and be sure to draw admiring glances from other drivers.

Two new colours, Rose Red and Crystal White, and the addition of 17" alloys with an anthracite finish, make the *TSIII* our most appealing coupe yet. Being a Hyundai, the *TSIII* represents outstanding value for money, whilst offering drivers the sheer grace and high performance of a coupe.



01



02



03



06



04



05

01 Quad exhaust pipes

02 Quilted door trims

03 Deluxe sill guards with *TSIII* logo

04 High level spoiler with integral brake light

05 and 06 Quilted leather sports seats with embroidered *TSIII* logo and red piping detail

accessories

There's little room for improvement when you drive a new Hyundai Coupe *SIII* but we pride ourselves in offering a range of accessories* that is truly extensive. We'll help you to get more enjoyment and pleasure out of your car by considering even the smallest details.

* This page only shows a selection of the accessory range available for the new Hyundai Coupe *SIII*. Please speak to your Hyundai dealer for details of the full range available or visit www.hyundai.co.uk



- 01 Alloy pedal kit and footrest.
Standard on 2.0 models
Available for 1.6
- 02 17" alloy wheels
- 03 Aluminium look fuel filler flap
- 04 Lowered spring kit
- 05 Tom Tom portable satellite navigation
- 06 Parrot CK3100 handsfree car kit
- 07 Rear roof spoiler
- 08 Wild spoiler



Main picture shows a 2.0 Coupe *SIII* in Carbon Grey, fitted with:

- Wild spoiler
- 17" Alloy wheels
- Aluminium look Fuel filler door cap



accessories

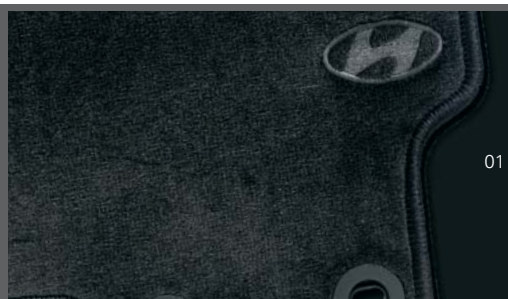
Coupe accessories add something special to your car. Choose from reversing sensors, Thule aluminium roof bars, and bike or snowboard carriers, through to hi-tech additions offering bluetooth capability. Add a rear spoiler with integral brake light, 17" alloy wheels and a lowered spring kit, all of which accentuate the stylish design, and you have a car that lacks for nothing.

Main picture shows a 2.0 Coupe *SIII* in Carbon Grey, fitted with:

- Wild spoiler
- 17" alloy wheels
- Reversing sensors
- Aluminium look fuel filler door cap



- 01 Black carpet mats
- 02 Black carpet mats with red border
- 03 Number plate reversing sensors



- 04 Reversing sensors
- 05 Boot tray
- 06 Removable tow bar (Product shown on pre-facelift model)
- 07 Roof bars* and one-touch electronic sunroof (1.6 model only)
- 08 Sill guards
- 09 Thule premier horizontal ski/snowboard carrier
- 10 Thule aluminium bicycle carrier
- 11 Horizon booster seat
- 12 Thule Karrite roof box

* Maximum roof payload is 40kg

colours

The new Hyundai Coupe *SIII* and *TSIII* come with a great choice of exterior colours that allow you to make the model you decide on even more individual.

Whether you pick a solid, metallic or mica finish, your car will stand out on the road and say something about you.



Carbon Grey (Metallic)



Shine Red (Solid)



Crystal White* (Solid)



Rose Red* (Mica)



Sleek Silver (Metallic)



Stone Black (Mica)

* These colours are exclusive to the new Hyundai Coupe *TSIII*.
Subject to availability. Please speak to your Hyundai dealer for further details.



- 01 16" alloy wheels
Standard on 1.6 models
- 02 17" alloy wheels
Standard on 2.0 models
- 03 17" alloy wheels
Anthracite finish
Standard on 2.0 *TSIII* models



trim

It's the finer details that make a difference, and the level and quality of interior trim you'll find in the new Hyundai Coupe *SIII* will not disappoint.

Whether it's the luxurious feel of the leather steering wheel, the tinted glass or the subtle alloy effect on the centre console, you'll soon realise that we've considered everything we could have.

Body Colours	Interior Colours	
	Red	Black
All <i>SIII</i> Models		
Solid		
Shine Red	●	●
Metallic		
Carbon Grey**	●	●
Sleek Silver	□	●
Mica		
Stone Black**	●	●
All <i>TSIII</i> Models		
Solid		
Crystal White	●	●
Metallic		
Carbon Grey†	□	●
Mica		
Rose Red	□	●
Stone Black†	□	●

● Standard □ Available at extra cost

** Red trim is available as standard for Carbon Grey and Stone Black Coupe *SIII* models

† Black trim is available as standard for Carbon Grey and Stone Black Coupe *TSIII* models

Model	1.6 Manual	2.0 Manual	2.0 Automatic
Engine			
Type	4 Cylinder DOHC 16 valve	4 Cylinder DOHC 16 valve	4 Cylinder DOHC 16 valve
Displacement cc	1,599	1,975	1,975
Bore & stroke mm	76.5 x 87.0	82.0 x 93.5	82.0 x 93.5
Compression ratio	10.0:1	10.1:1	10.1:1
Max power kW/BHP	77/103 @ 5800rpm	105/141 @ 6000rpm	105/141 @ 6000rpm
Torque Nm/lbs ft	143/106 @ 4500rpm	186/137 @ 4500rpm	186/137 @ 4500rpm
0-62mph in seconds	11.9	9.3	10.6
Top Speed mph	115	129	124
Suspension			
Front	MacPherson strut with coil spring		
Rear	Dual link type with coil spring		
Steering			
System	Power assisted rack and pinion steering. Energy absorbing, collapsible steering column		
Steering wheel lock to lock turns	2.57	2.57	2.57
Brakes			
System	Dual diagonal split circuit, power assisted with anti-lock brakes (ABS) with Electronic Brake force Distribution (EBD)		
Front	11" ventilated discs with floating calipers with pad wear warning device		
Rear	10" solid discs with floating calipers with pad wear warning device		
Tyres			
Radial Ply	205/55 R16	215/45 ZR17	215/45 ZR17
Wheels			
Alloy	6.5J x 16	7.0J x 17	7.0J x 17
Weights and capacities			
Luggage capacity SAE litres	418	418	418
Kerb weight kg	1,256	1,312	1,342
Gross vehicle weight kg	1,700	1,740	1,740
Max tow weight kg – Braked**	1,200	1,400	1,400
Max tow weight kg – Unbraked	550	550	550
Noseweight kg	50	60	60
Max roof weight kg	40	40	40
Fuel tank capacity litres	55	55	55
Fuel consumption l/100km (mpg) and emissions			
Urban†	9.8 (28.8)	10.9 (25.9)	11.9 (23.7)
Extra urban†	6.3 (44.9)	6.4 (44.1)	6.6 (42.8)
Combined†	7.6 (37.2)	8.0 (35.3)	8.5 (33.2)
CO ₂ Emissions g/km*	182	193	203
HC+NO _x Emissions g/km*	0.038	0.025	0.046

† The results given above do not express or imply any guarantee of fuel consumption of any model to which this brochure refers. The driver's style and road traffic conditions, as well as the extent to which the vehicle has been driven and the standard of maintenance, will all affect its fuel consumption.

**Applies to fully laden vehicle. For driver only weight please consult your Hyundai dealer.

* g/km = grams of emitted substance per kilometre travelled.
CO₂ = Carbon Dioxide; HC = Hydrocarbons; NO_x = Nitrogen Oxide

Model	1.6	2.0	2.0 <i>TSIII</i>
Safety and security			
2 x 3 Point Rear Seatbelts	●	●	●
Adjustable Head Restraints – Front	●	●	●
Adjustable Steering Column – Height	●	●	●
Airbags – Front Side	●	●	●
Airbags – Driver and Front Passenger	●	●	●
Anti-lock Brakes (ABS) with Electronic Brake force Distribution (EBD)	●	●	●
Central locking – Remote Operation with Alarm	●	●	●
Engine Immobiliser	●	●	●
Height Adjustable Seatbelts – Front	●	●	●
ISOfix Child Seat Anchorage – Rear Only	●	●	●
Locking Wheel Nuts	●	●	●
Power Assisted Steering	●	●	●
Seatbelt Pre-tensioners with Load Limiters	●	●	●
Interior			
Centre Console – Metal Grain Effect	●	●	●
Cigarette Lighter and Ashtray – Illuminated	●	●	●
Cloth Upholstery with Leather Trim	●		
Cup Holders – Front	●	●	●
Door Pockets – Front	●	●	●
Front Armrest – with Storage Compartment	●	●	●
Leather Gear Knob	●	●	●
Leather Seat Facings	□	●	
Leather Seat Facings - Quilted with <i>TSIII</i> Embroidery			●
Leather Steering Wheel	●	●	●
Map Reading Lights	●	●	●
Metal Trimmed Pedals and Foot Rest		●	●
Overhead Console with Sunglasses Holder	●	●	●
Quilted Door Trims			●
Rear Seat – 50/50 Split	●	●	●
Seat Back Pockets – Front Passenger	●	●	●
Tinted Glass	●	●	●
Exterior			
16" Alloy Wheels	●		
17" Alloy Wheels		●	
17" Alloy Wheels – Anthracite Finish			●
Body Coloured Bumpers	●	●	●
Body Coloured Door Handles and Mirrors	●	●	●
Eibach Lowering Sport Springs			●
Front Fog Lights	●	●	●
High Level Spoiler with Integral Brake Light			●
Quad Exhaust Pipes			●
Rear Fog Light	●	●	●
Rear Spoiler with Integral Brake Light	●	●	
Solid Paint	●	●	●
Temporary Spare Wheel	●	●	●
Twin Exhaust Pipes		●	

Model	1.6	2.0	2.0 <i>TSIII</i>
Functional			
3 Way Catalytic Converter	●	●	●
4 Speed H-matic Automatic Transmission		□	
5 Speed Manual Transmission	●	●	●
6 Speakers	●	●	●
Adjustable Intermittent Front Wipers	●	●	●
Aerial – Integral Glass Element	●	●	●
Air Conditioning	●		
Air Conditioning - Climate Control		●	●
Cruise Control		●	●
Deluxe Sill Guards with <i>TSIII</i> Logo			●
Electric Door Mirrors	●	●	●
Electric Headlight Beam Levelling	●	●	●
Electric Tilt and Slide Sunroof		●	●
Electric Windows - Front	●	●	●
Heated Door Mirrors		●	●
Heated Front Seats		●	●
Heated Rear Window	●	●	●
Instrument Panel Brightness Control	●	●	●
Luggage Compartment Light	●	●	●
Luggage Net	●	●	●
Multi-gauge Instrument Panel		●	●
Remote Boot Release	●	●	●
Remote Fuel Filler Flap Release	●	●	●
Seat Height Adjustment – Driver	●	●	●
Seat Lumbar Adjustment – Driver	●	●	●
Speed Sensitive Front Wipers	●	●	●
Stereo RDS Radio/CD Player/iPod connectivity	●	●	●
Trip Computer	●	●	●
Gauges – Speedometer, Rev Counter, Fuel Level, Water Temperature, Trip Odometer	●	●	●
Warning Lights – ABS, Oil Pressure, Door/Tailgate Ajar, Battery Charge, Full Beam, Low Fuel, Airbag, Hazard, Rear Fog Light	●	●	●
Customer options			
4 Speed H-matic Automatic Transmission		□	
Leather Seat Facings and Door Trim	□		
Metallic Paint	□	□	□
Mica Paint	□	□	□
Satellite Navigation (Smartnav™)	□	□	□

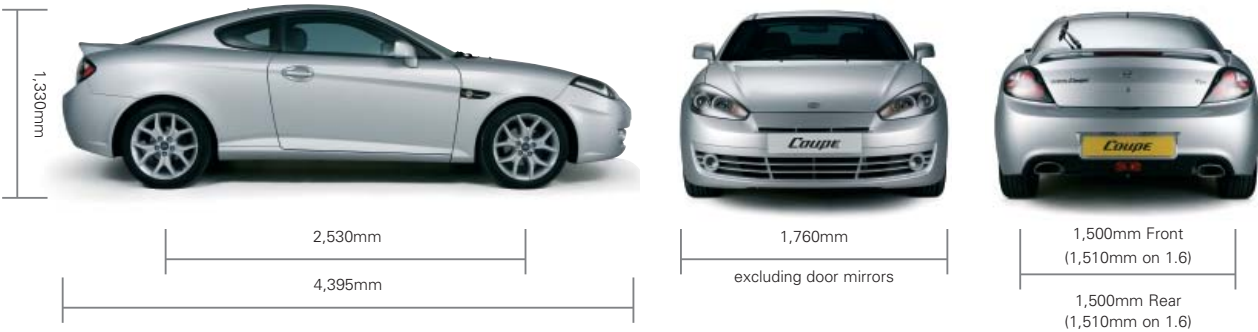
● Standard equipment □ Optional equipment

A car with room to move and space to spare

dimensions

The new Hyundai Coupe *SIII* isn't too big for its boots, but still possesses all the space you'll need in a car of its class.

The Coupe *SIII* can seat up to three passengers in surprising comfort and offer up to 418 litres of luggage capacity. It's this flexibility and practicality that make the new Hyundai Coupe *SIII* a bigger car than it looks in more ways than one.



	1.6 Manual	2.0 Manual	2.0 Automatic
Dimensions mm			
Overall length	4,395	4,395	4,395
Overall width – excluding door mirrors	1,760	1,760	1,760
Overall height	1,330	1,330	1,330
Wheelbase	2,530	2,530	2,530
Track Front	1,510	1,500	1,500
Track Rear	1,510	1,500	1,500
Turning circle metres	10.9	10.9	10.9



No other car manufacturer offers drivers the security and assurance of a warranty quite like Hyundai's.



Hyundai Car Finance

The vast majority of our customers borrow money from somewhere to enable them to purchase their new Hyundai. At Hyundai Car Finance we believe we have a complete solution with a range of products for all Hyundai customers. We provide Hire Purchase or Personal Loan options. Simply finance any amount over any period between 12 to 60 months.

Sequences

Reduce your monthly payments by deferring part of the cost to the end of the agreement, resulting in an optional final payment and offering you 3 great choices.

Payment Protection

We offer 3 levels of Payment Protection cover to cater for a whole range of circumstances.

Please see your dealer for details.

Guaranteed Asset Protection

Did you know that if your vehicle was written off as result of an accident, fire or theft, your insurance company would only pay the current market value of the vehicle, and not what you actually paid for it? If you wanted to replace your vehicle you would have to find the difference.

GAP insurance can cover you for any shortfall from your insurance company in a total loss situation.

Competitive Advantage System

For further information and the opportunity to compare our vehicles against others you may be considering, please visit the Competitive Advantage System on our website at www.hyundai.co.uk.

fiveyear
warranty

At Hyundai we are so confident in the quality of our cars that every car in the range is covered by a unique, free Five Year Warranty.

What makes it so good is the fact that it is manufacturer backed, for the entire five year period. It's a permanent offer on all of our new vehicles, is unlimited by mileage* and is also fully transferable. Also included is a six year anti-perforation warranty and one year's RAC Assistance.

* Limitations apply to vehicles used for private hire and commercial use. Ask your dealer for details.





information

If you need to find out more about Hyundai itself, or any of our vehicle range, please consult your local Hyundai dealer, or feel free to visit our website. There's very little you won't be able to discover and then it's the simple matter of trying and buying, because once you test drive a Hyundai, we're sure it will surprise and excite in equal measure.

www.hyundai.co.uk

Drive your way™

